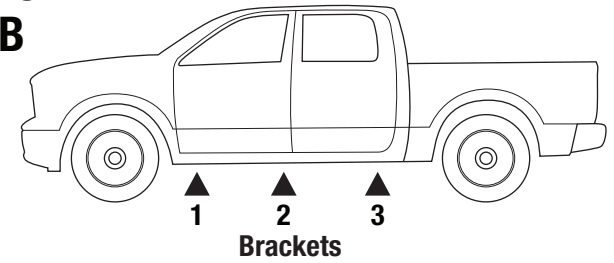


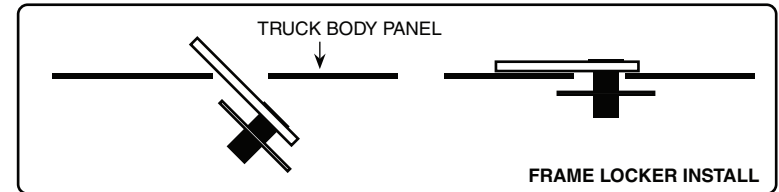
### PARTS LIST

QTY	PART	QTY	PART	QTY	PART
4	BRACKET FRONT/MIDDLE	1	FRONT BRACE PASSENGER	6	5/16" FLANGE NUT
2	BRACKET REAR	1	FRONT BRACE DRIVER	4	3/8" FLANGE BOLT
1	REAR BRACE PASSENGER	1	REAR BRACE DRIVER	20	3/8" FLANGE NUT
		4	SINGLE FRAME LOCK BOLT	6	CARRIAGE BOLT
		6	3/8" DOUBLE FRAME LOCK BOLT	6	BRACKET CLAMP

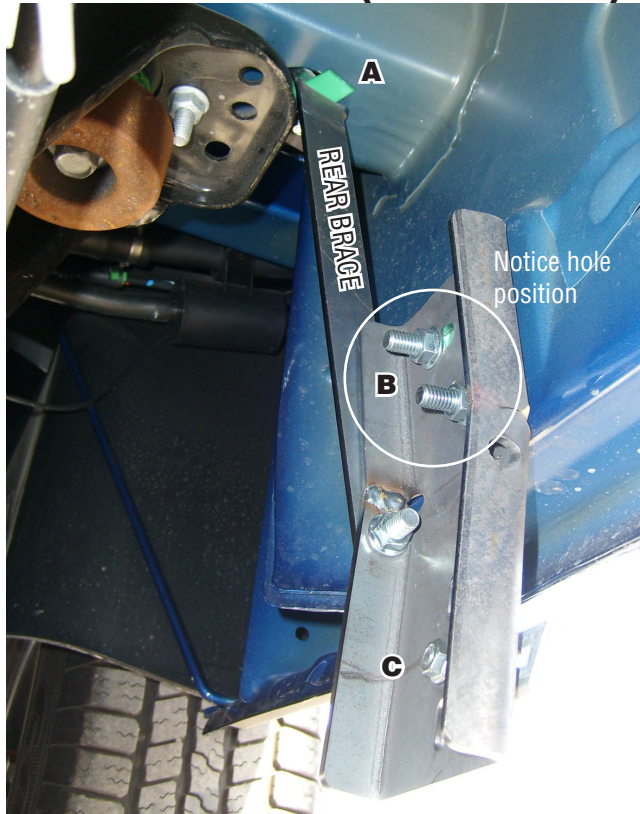


### BRACKET INSTALLATION

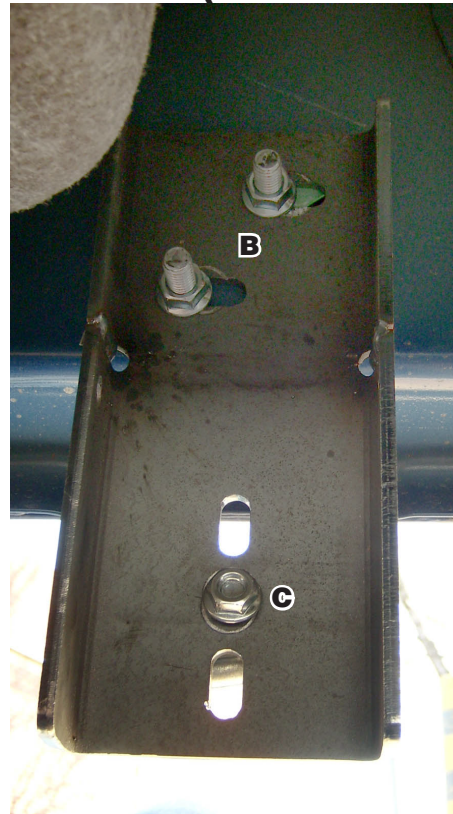
1. Remove contents from box and check for damaged parts. Verify all parts are present, making sure to read and understand instructions before install.
2. Locate (3) mounting points on body panel. Remove black tape covering holes. Install frame lock bolts into factory locations.
3. Thread square plastic washers on frame lock bolts to hold them in place. Holes "A" & "B"
4. Place brackets to their specific locations as shown in illustration on the frame lock bolts and fasten with 3/8" flange nuts. FIG 1, 2 & 3
4. Repeat process for all brackets on passenger side.



### BRACKET 3 (DRIVER REAR)



### BRACKET 2 (DRIVER MIDDLE)



### BRACKET 1 (DRIVER FRONT)



### HD STEP INSTALL

1. Install 5/16" carriage bolt and "bracket clamp" to each bracket through bottom hole . Having a second person or jack stands will be helpfull on install.
2. CAREFULLY place HD STEP over bracket clamps and align so that clamp tabs are in between step channel. Begin to hand tighten 5/16" flange nuts while making sure bracket clamp tabs are aligning to the bracket holes.
3. Once you have all clamps hand tightned to brackets, this should allow the HD STEP to slide forward and back to allow for final alignment to vehicle.
4. Once satisfied with alignment, tighten all 5/16" flange nuts for final install.

